

PLEASE SUBMIT YOUR COMMENTS by
APRIL 29!

SAVE THE ARLISS!

(A Rocket Launch for International Student Satellites)





- The Bureau of Land Management, BlackRock desert in Nevada, USA is taking some measures that will affect ARLISS project in the coming years (it could result in the termination of the project). We can change that by sending comments to their site in favor of ARILSS project.
- AeroPac and UNISEC would like to ask you to help us by submitting your comments.



Burning Man Alternative Comparisons

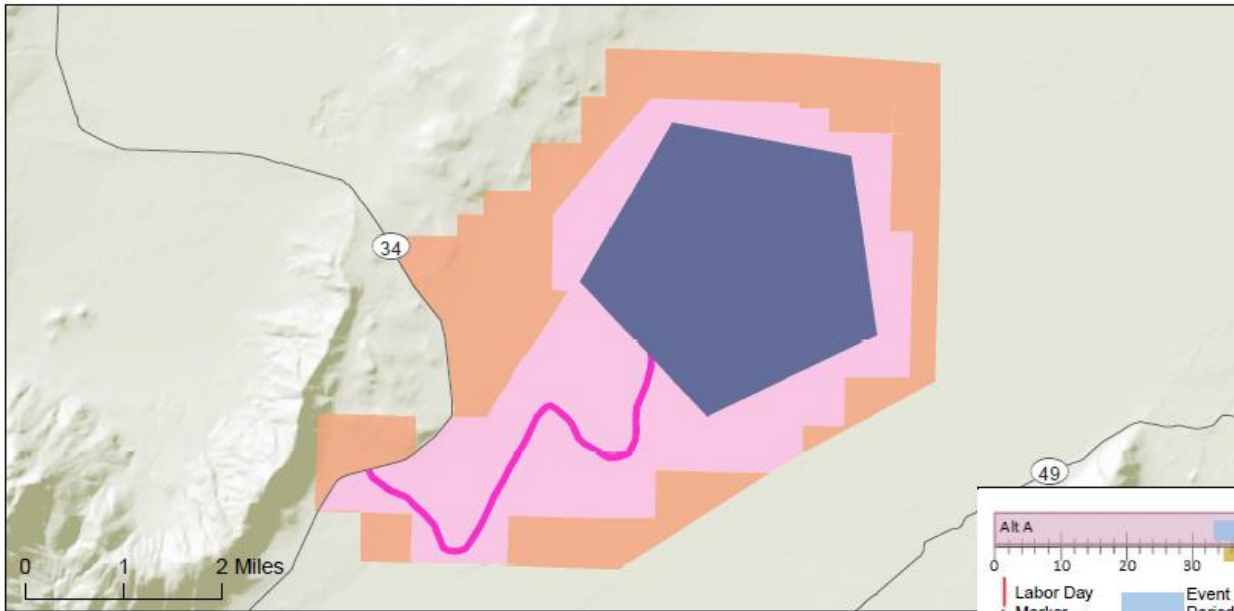
Alternative A

Closure Areas

-  Phase 1:
9,580 acres
-  Phase 2:
5,240 acres

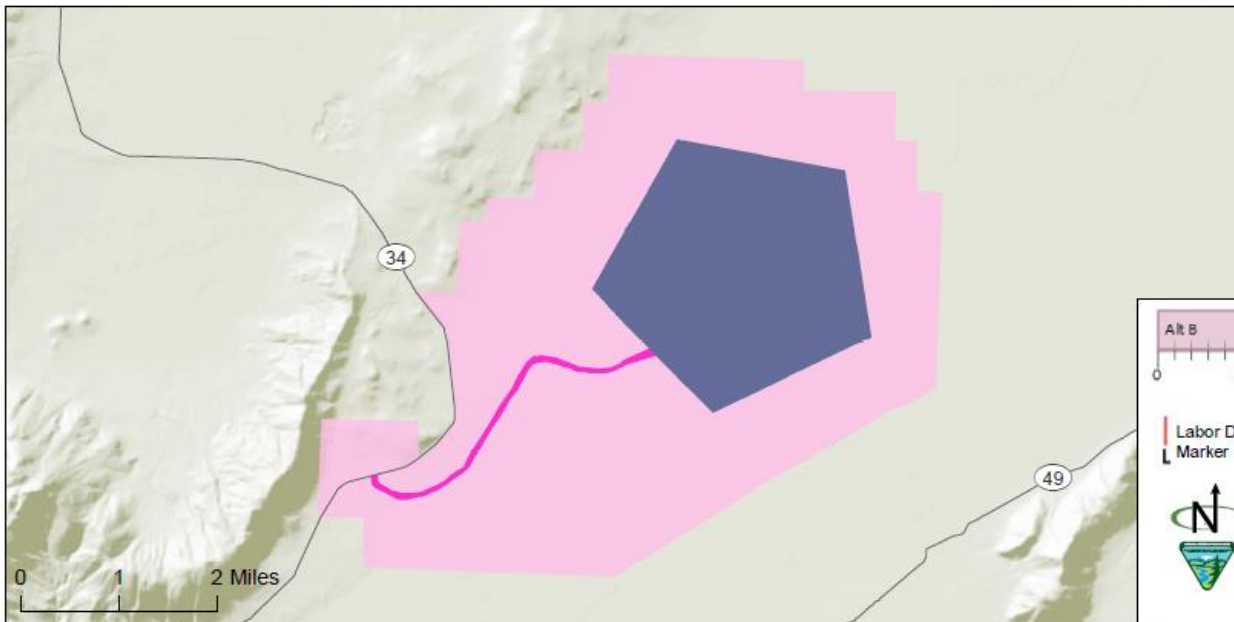
Total: 14,820 acres

-  Event area
-  Event Entrance Road





Alternative B

-  Closure Area
Total: 14,140 acres
-  Event area
-  Event Entrance Road



Alt B timeline: Labor Day Marker at day 0, Event Period from day 15 to 25, Phase 1 Period from day 0 to 42. Total duration: 42 days.

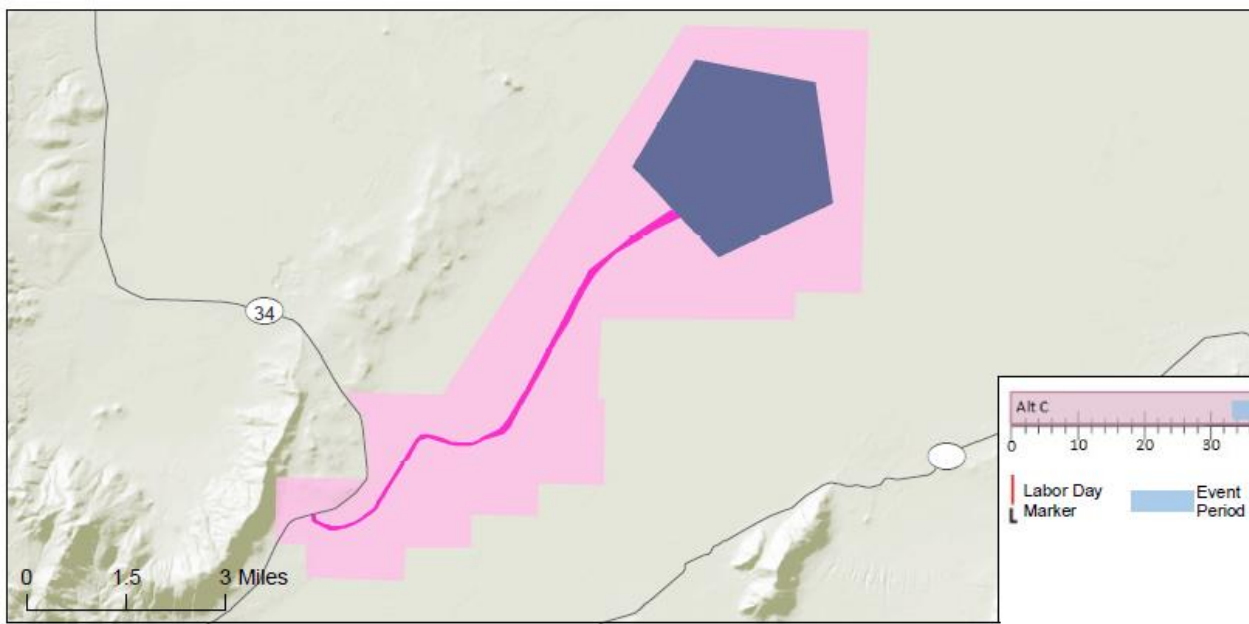
 Bureau of Land Management
Winnemucca District
5100 E. Winnemucca Blvd.
Winnemucca, NV 89445
04/02/19



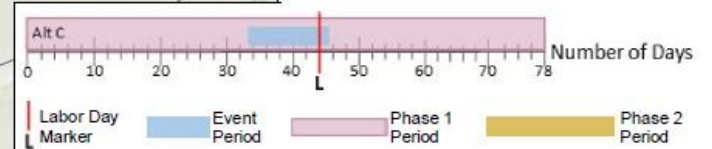
No warranty is made by the Bureau of Land Management as to the accuracy, reliability, or completeness of these data for individual use or aggregate use with other data. Original data were compiled from various sources. This information may not meet National Map Accuracy Standards. This product was developed through digital means and may be updated without notification.

Burning Man Alternative Comparisons

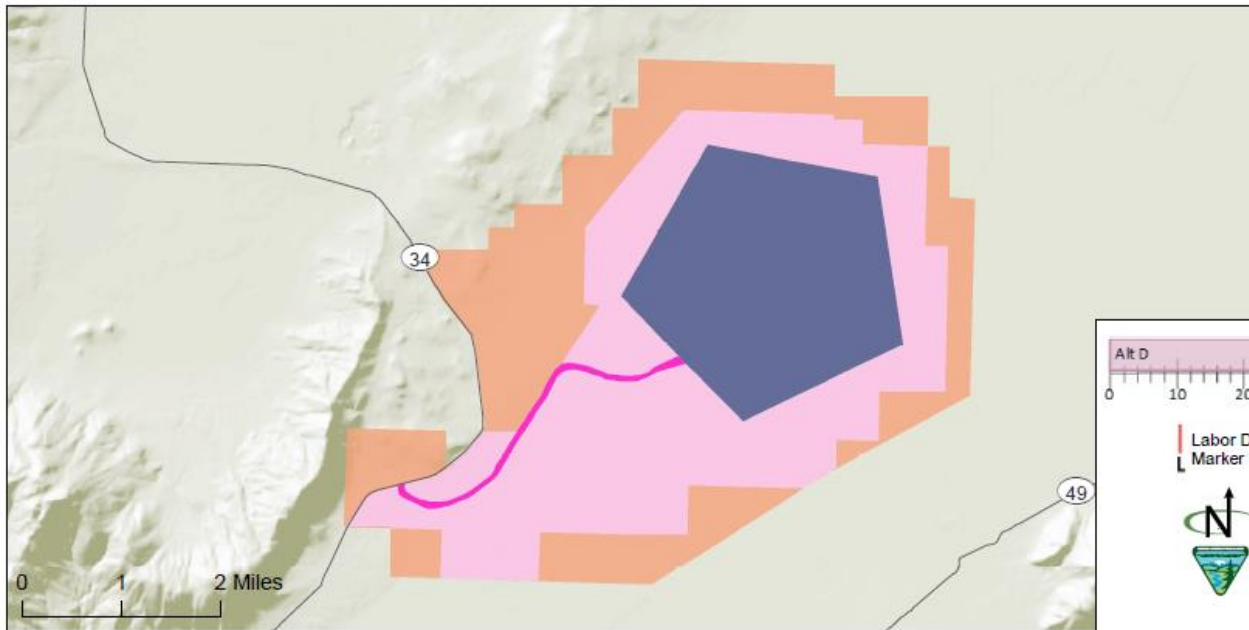
Alternative C



- Closure Area
Total: 18,940 acres
- Event area
- Event Entrance Road



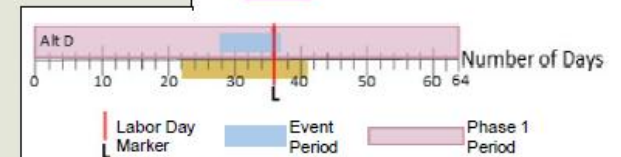
Alternative D



- Phase 1:
9,560 acres
- Phase 2:
4,760 acres

Total: 14,320 acres

- Event area
- Event Entrance Road



Bureau of Land Management
Winnemucca District
5100 E. Winnemucca Blvd.
Winnemucca, NV 89445
04/02/19



No warranty is made by the Bureau of Land Management as to the accuracy, reliability, or completeness of these data for individual use or aggregate use with other data. Original data were compiled from various sources. This information may not meet National Map Accuracy Standards. This product was developed through digital means and may be updated without notification.

Alternative E: No permission control by BLM

AeroPac's views on 5 Alternatives

- We prefer alternative B or D We definitely do not prefer A, C, or E since we think those alternatives would make things worse for our events with lower access and increase the level of dust and damage to the playa.
- **NO! Alternative A:** Alternative A has a 490 acre increase in playa closure area, a 5,000 person increase per year until capped at 100,000 and does allow access permits for rocketry. We don't think that is helpful to rocketry as it will further increase dust and impinge access on rocketry and limit the area available for ARLISS launch and recovery.
- **YES! Alternative B:** Alternative B has a reduced population of 50,000 and the same footprint as they did in 2018. That one is not too bad. We would have access and there would be fewer people trampling the playa during BM which should lower the amount of residual dust for ARLISS.
- **NO! Alternative C:** Alternative C would be similar to Alternative A (Proposed Action), except the Closure Area boundary would be increased to 18,940 acres, the 3,900-acre Event perimeter would shift to the north, and there would be no phased Closure Area. Primary access to the playa would remain at 8-Mile Playa Access; the distance from CR 34 to the Event site would be 8 miles (see Figures 2-1 and 2-2; Appendix A). The maximum Event population (bodies on playa) would be 100,000. There would be no more than 100,000 total attendees (including Event participants, staff, and volunteers) allowed on the playa from the start of the Closure Order to the end of the Closure Order. Please include in your comments that you don't like alternative C. We definitely don't want them closer to where we launch. The dust is bad enough from where they are now.
- **YES! Alternative D:** Alternative D is the same as what they had in 2018. No increase in boundaries. Population cap of 80,000 and access permits for rocketry.
- **NO! Alternative E:** Alternative E is no Burning Man event at all but they state that people would just have an un-permitted gathering and screw up everything worse than they do now.

More information is available

Burning_Man_Event_SRP-Draft_EIS_Vol1.pdf

Burning_Man_Event_SRP-Draft_EIS_Vol2.pdf

<https://eplanning.blm.gov/epl-front-office/eplanning/planAndProjectSite.do?methodName=dispatchToPatternPage¤tPageId=139649>

Please submit your comments by April 29!

<https://eplanning.blm.gov/epl-front-office/eplanning/planAndProjectSite.do?methodName=dispatchToPatternPage¤tPageId=139649>

U.S. DEPARTMENT OF THE INTERIOR BUREAU OF LAND MANAGEMENT

ePlanning **DOI-BLM-NV-W030-2018-0003-EIS (Burning Man Special Recreation Permit Renewal)**

> NEPA Register > DOI-BLM-NV-W030-2018-0003-EIS > Documents

Project Search: Find Whole Words Only

Home
Documents
Contact Information
How to get involved
Meetings
Maps
Data
Links
FAQs
Last Updated: 04/15/2019 17:45:23 MDT

Documents

NEW!

Draft Environmental Impact Statement Volumes


Document Name	Release Date	Available Formats	Public Participation	
Burning Man Event SRP-Draft EIS_Vol1	03/15/2019	(3247 KB)	Open (03/15/2019 - 04/29/2019)	<input type="button" value="Comment on Document >>"/>
Burning Man Event SRP-Draft EIS_Vol2	03/15/2019	(31692 KB)		

Special Studies Supporting the Environmental Impact Statement

Document Name	Release Date	Available Formats	Public Participation	
AERMOD Modeling Report	03/15/2019	(4834 KB)		
Air Resources Baseline Technical Report	03/15/2019	(28731 KB)		
Artificial Light at Night Assessment	03/15/2019	(4551 KB)		
Assessment of Economics, Social Values, and Environmental Justice	03/15/2019	(4717 KB)		
Biological Resources Baseline Report	03/15/2019	(8090 KB)		
Black Rock City 2012 Oil Drip Monitoring	03/15/2019	(258 KB)		
NASA Developer Group Study on the Black Rock Playa	03/15/2019	(6419 KB)		
Noise Impact Assessment	03/15/2019	(9892 KB)		
Post Event Inspection Reports 2014-2017	03/15/2019	(8464 KB)		
Public Health and Safety at the Burning Man Event	03/15/2019	(414 KB)		
Traffic Analysis	03/15/2019	(8103 KB)		

Public Meeting Materials - April 2019

Document Name	Release Date	Available Formats	Public Participation	
Alternatives Handout	04/15/2019	(91 KB)		



Click Here

Tips for making effective comments

- It was made clear by the BLM that they want written comments **from as many individuals as possible**. Group signatures are not going to be as effective as individual ones.
- Just make sure that **you address your comments to one or more specific options listed** in the EIS.
- **They will respond better to positive comments** than negative bashing of Burning man in general.
- **Short focused responses** will have greater likelihood of being read.
- **Be positive about ARLISS**, your experience at Black Rock and how important these experiences are for science and how unique it is.
 - Thank you for the opportunity to speak on a mission that is not only important to me - but to many not only in the United States, but around the world. Not only to people of maturity like myself, but for learners of all ages.
 - AeroPac, with international partners, sponsors ARLISS - A Rocket Launch for International Student Satellites - the premier international rocketry event that for twenty years has given thousands of students from over thirty countries opportunities to experiment with rockets and satellites. This program invented CubeSats which have become the de facto standard format for Low Earth Orbiting satellites and hundreds of such satellites have been orbited by ARLISS alumni (and sent to deep space and Mars!) and inspired a generation of New Space start up businesses. It is possibly the single most influential space education program in the world.

Sample comment -1

I attended a rocket launch event organized by AEROPAC in black rock in 2005. Our team of University of -- developed a small satellite model "CanSat" which was launched up till 3.6km by AEROPAC's rocket and we could conduct engineering experiment while the CanSat is falling down to the ground. This experiment is called "ARLISS." Through this experiment, we could obtain many technologies such as -----, and also we gained skills and experiences of project management, team work etc. Based on this CanSat experiment, we started real satellite development, and already launched ---- into Earth orbit. From this experience, I believe that ARLISS contributed tremendously to our space engineering and project management education, so I would like to cordially ask the authority to allow AEROPAC to continue the rocket launch event and ARLISS in Black Rock.

I think Alternative B or D would make it possible for the events to coexist.

Sample Comment 2

- My name is xxx of xxx university. I am making a satellite called CanSat to attend ARLISS where our hand-made satellite would be launched up to 4 km altitude. I am very anxious as I heard that we might not be allowed to launch it this year. Please give us a chance to launch in September. I have worked so hard since last year to attend it. It is a precious opportunity that would not be given in Japan. Since my high school age, I have wanted to learn about aerospace engineering and make small satellite at University. ARLISS is the only event that we can make a small satellite and launch it with rocket. So I have been working on this event in school life.
It is one of my dreams to launch my satellite in the Black Rock desert.

In my understanding, Alternative B or D would make it possible for us to launch the satellite in September. Your consideration would be highly appreciated.