



MITSUI & CO.

November, 2019

This document is Proprietary & Confidential . No part of this document may be disclosed in any manner to a third party without the prior written consent of Mitsui & Co., Ltd.



Mitsui at a Glance

Revenue

US\$ **62.7** billion

Total Assets

US\$ **106.7** billion

Profit for the Year

US\$ **3.7** billion

Core Operating C/F

US\$ **5.1** billion

Number of Offices
and Overseas
Trading Affiliates

138

Number of
Affiliated Companies
for Consolidation

491

Global Network
-Countries/Regions-

66

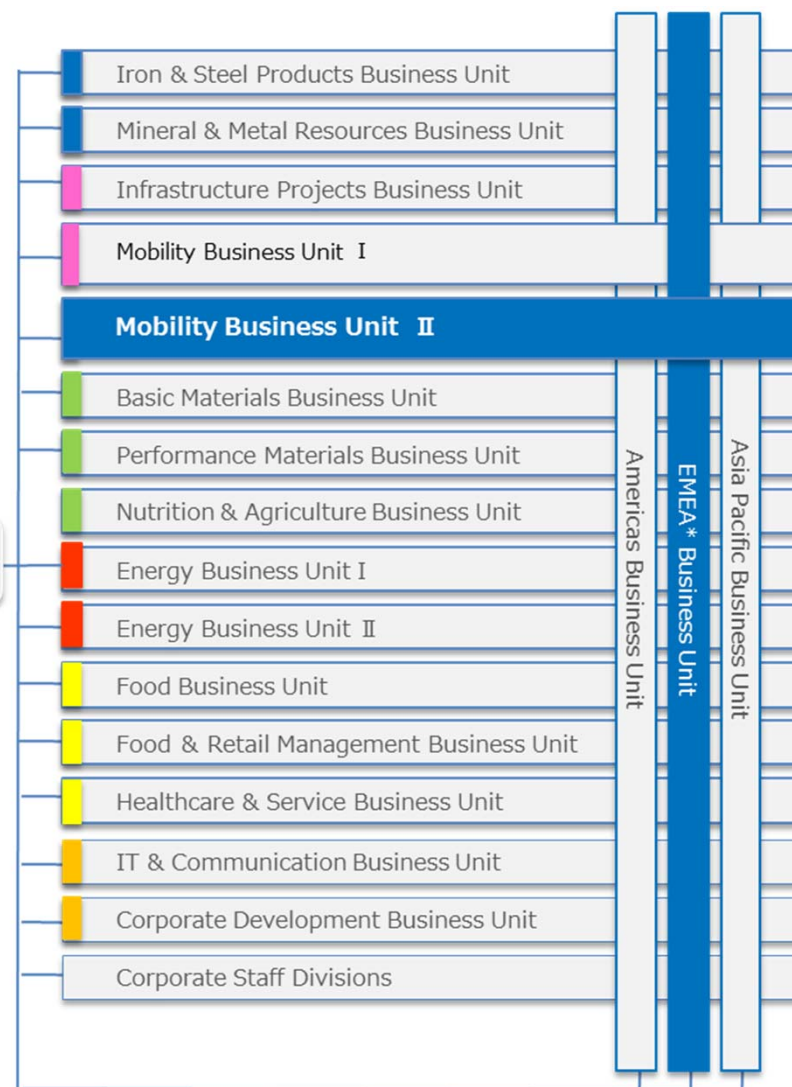
(As of October 1, 2018)

Number of Employees
(consolidated)

43,993

President
& CEO

Business Unit

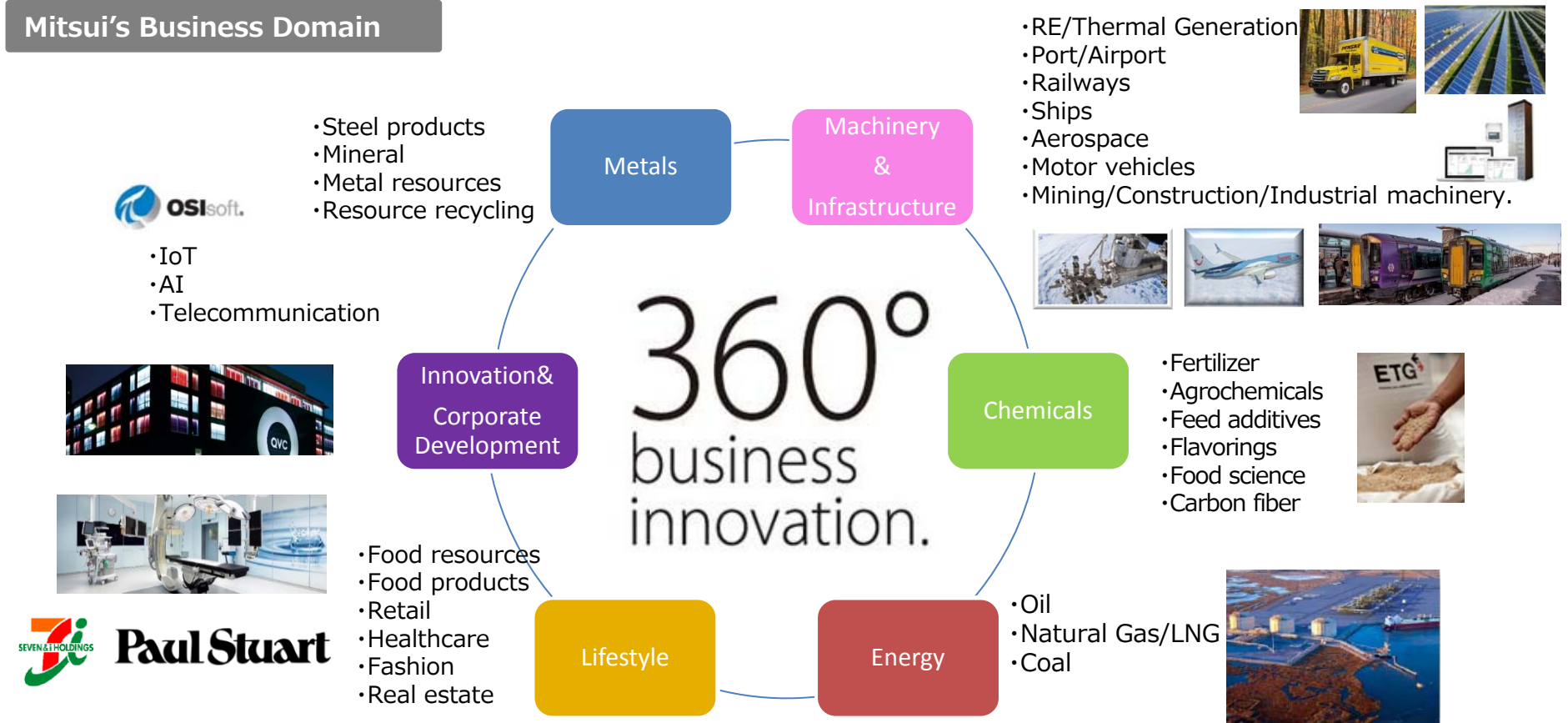


Mitsui's Business Areas and Key Function

Providing new value across a wide range of industries, leveraging our business engineering capabilities and diverse experience.



Mitsui's Business Domain



Mitsui's Capability



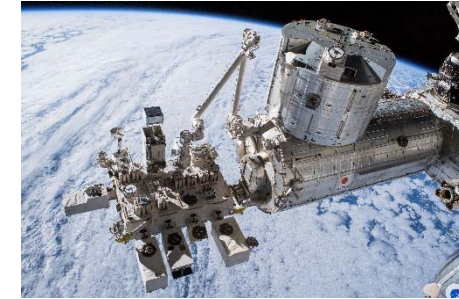
Mitsui's Space Business①



➤ CubeSat Deployment Service from ISS

Provide deployment service from International Space Station Japanese Experimental Module "Kibo" for CubeSat.

This Project is JAXA's first privatization of its ISS service.



➤ Overview of Deployment Service:

- Inclination: 51.6[deg]
- Altitude: under 400km
- Applicable size: 1U~6U and 50kg class
- Launch Timing: Quarterly
- Launch Site: Japan and US



➤ Our Service:

- Procuring launch schedule
- Supporting safety review
- Performing Integration
- Logistics service
- Launch and Deployment by JAXA



Mitsui's Space Business②

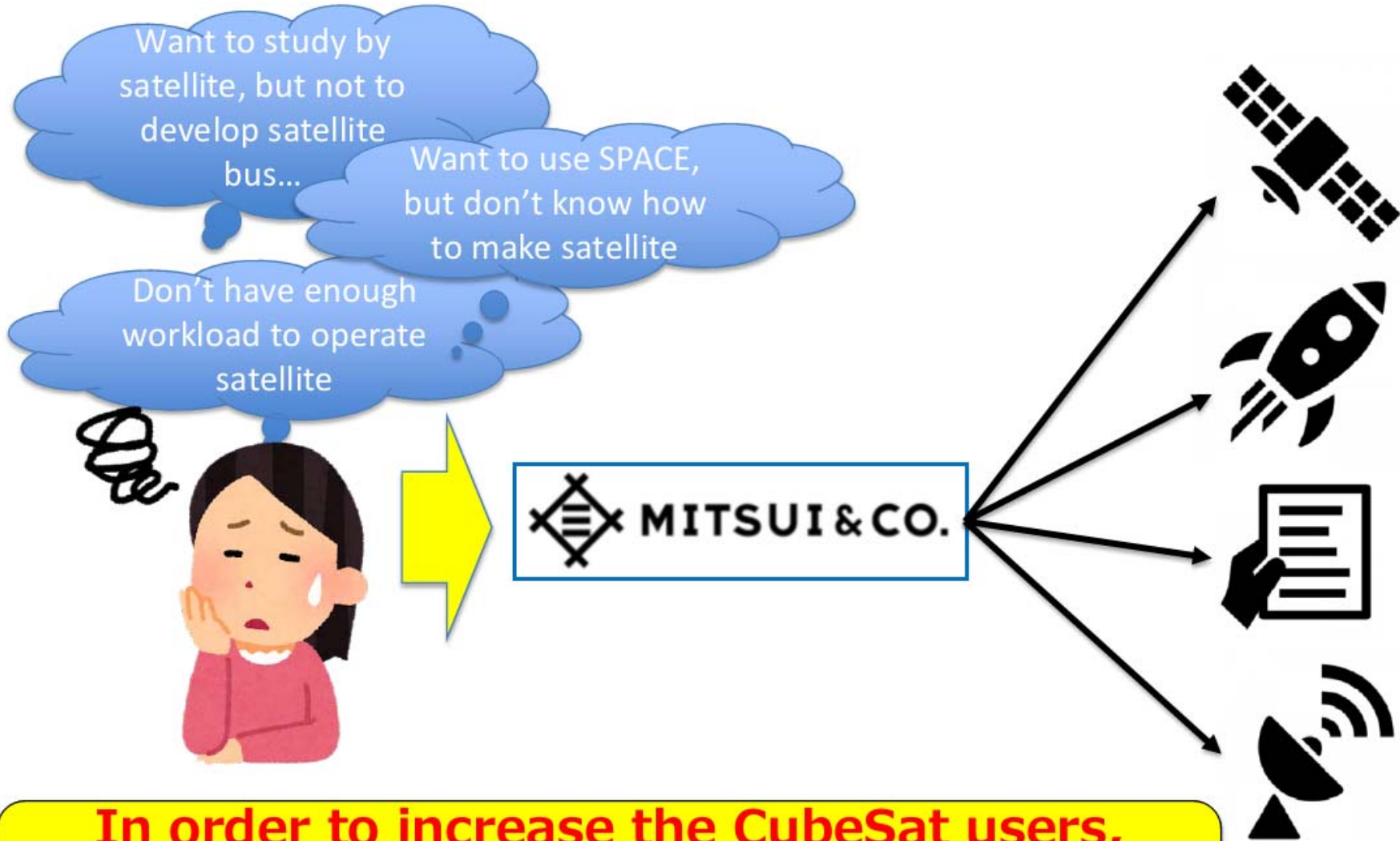


Spaceflight, Inc. (SI)

- HQ : Seattle, WA USA(established in 1999)
- Business : 1) Rocket ride share business
2) Earth Observation business (Blacksky)
- Overview of the business
 - 1) Rocket ride share business :
 - 2) Earth Observation business (Blacksky) :



One Stop Service



In order to increase the CubeSat users, Mitsui is providing the BEST solution for satellite development, launch and operation!



<Ref.>Launch Schedule(until 2021 1Q)



Launch plan	Spacecraft	Launch site
May, 2020	HTV	Japan
Aug, 2020	Space X/Dragon	US
Oct, 2020	NG/Cygnus	US
Jan, 2021	SpaceX/Dragon	US

The launch slot every quarter



【HTV】



【Space X/Dragon】



【Northrup Grumman/Cygnus】

Company Profile of MBA



Mitsui Bussan Aerospace Co., Ltd.

- Established in April, 1982
- A 100% owned subsidiary of Mitsui & Co., specialized in sales and marketing in aviation and aerospace fields
- Approx.100 employees as of April, 2019
- Sales amount approx. US\$190M – as of March 2019
- Overseas Offices
 - US Subsidiary: Dallas, TX
 - European Liaison Office: Milano, Italy
- Space business department was established on July 1st, 2019



Thank you!

360° business innovation.



MITSUI & CO.